



AOPA SLOVENIJA

2021-06-17

CERKVENJAK, SLOVENIA

ČAGONA

Apt Elev 741'/226m

N46°32'52" E015°54'55"

AIR/GND

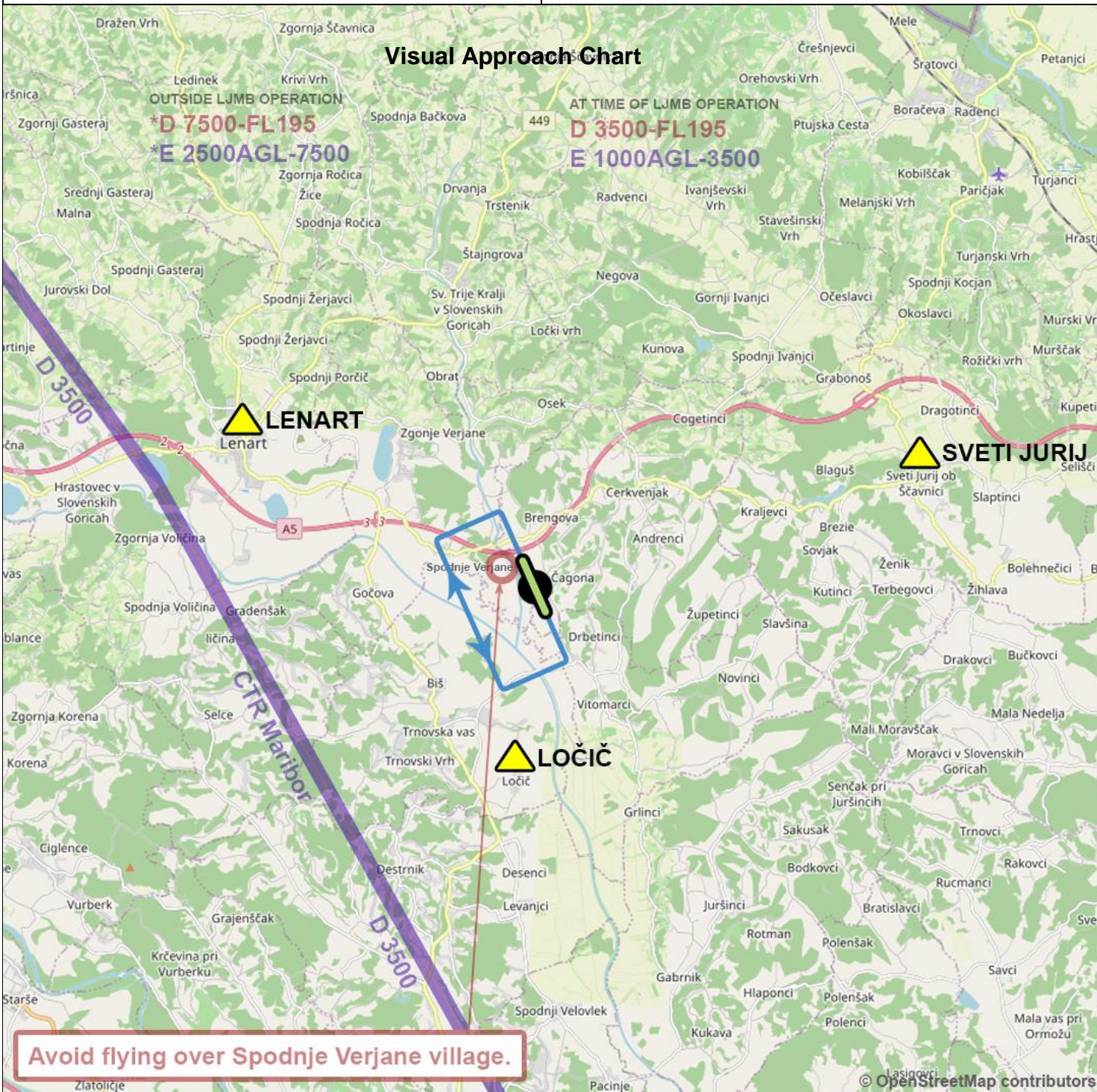
CERKVENJAK AIRFIELD

122.505

APP

MARIBOR APPROACH

119.205



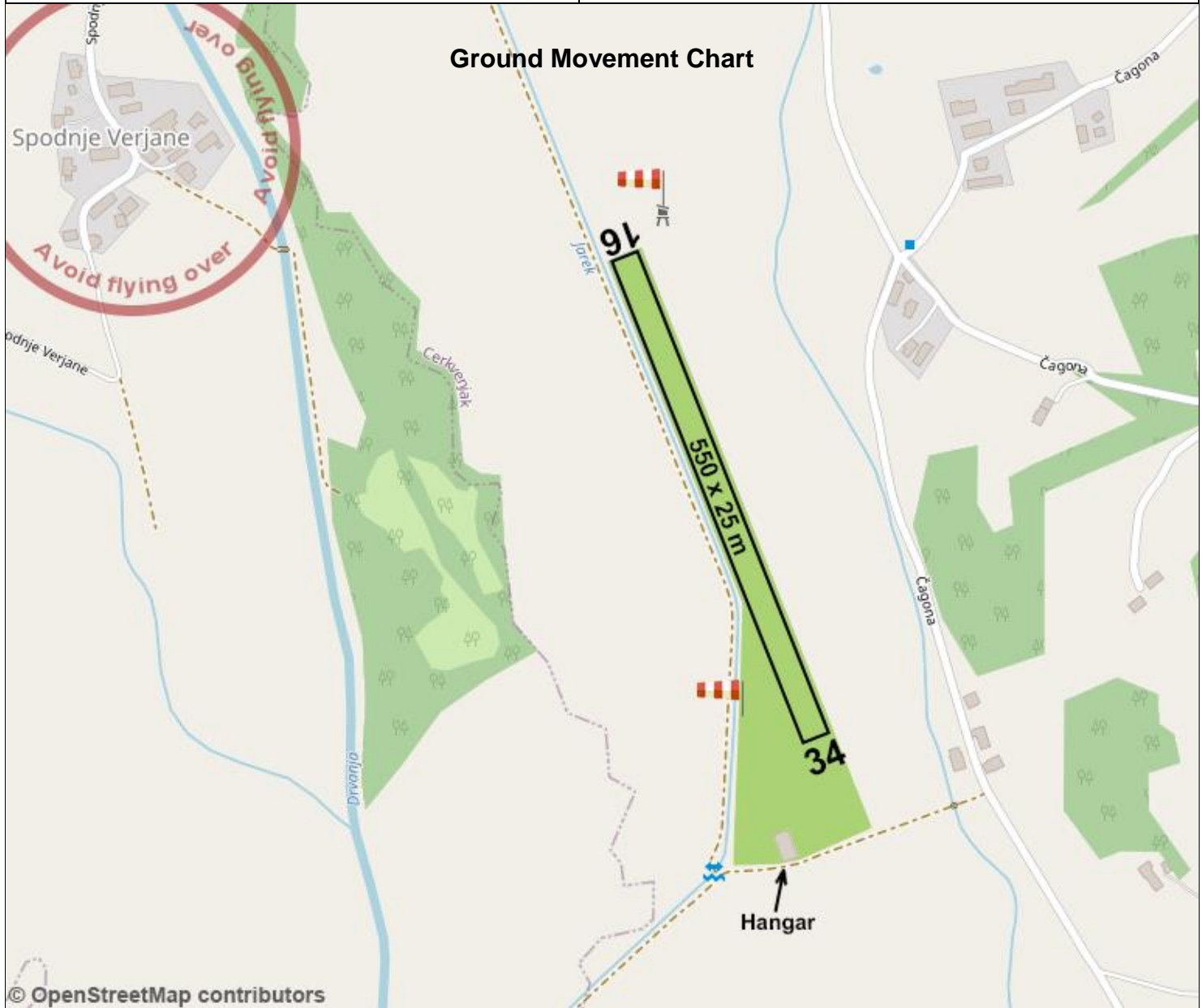
RWY	DIMENSION	SURFACE	TORA	TODA	ASDA	LDA	LIGHTS	PATTERN
16	550 x 25 m	grass	550	650	550	550	nil	RH
34			550	550	550	550		LH

NOTES:

All the distances in meters. Not for official use. All data for information purposes only. Check latest info in official aerodrome manual and AIP before commencing any flight. Copyleft © www.vfr-charts.ga

Apt Elev **741'**/226m
N46°32'52" E015°54'55"

AIR/GND	CERKVENJAK AIRFIELD 122.505	APP	MARIBOR APPROACH 119.205
---------	--	-----	---



Warnings	<ol style="list-style-type: none"> No continuous radio watch. Transmit blind. Pay attention to the road before threshold 34. Avoid flying over populated areas, especially village Spodnje Verjane, located 500 m NW of threshold 16. 		
Remarks	<ol style="list-style-type: none"> PPR – Prior permission required. Only VFR flights allowed. Western traffic pattern only due to terrain. 		
Operator	Aeroklub Sršen Cerkevjak	Email	aksrsen.cerkvenjak@gmail.com
Address	Čagona 23b	Internet	
Zip City	SI-2236 Cerkevjak	ARO	+386 4 2040 420 – Ljubljana
Tel		METEO	+386 2 6296 871 – Maribor
Fax		Customs	N/A
Mobile	+386 31 486 884	Fuel	N/A

SYMBOL LEGEND



Aerodrome with paved runway



Aerodrome with grass runway



Another aerodrome



UL airstrip



Traffic pattern for general aviation



Traffic pattern for gliders



Non compulsory reporting point



Compulsory reporting point



Hospital, Spa, Church



Power plant

D 7500-FL195
E 2500 AGL-7500

Airspace class with vertical limits



Paved runway with treshold designation



Grass runway with displaced treshold and treshold designation



Paved taxiway with designation



Grass taxiway with designation



Parachuting circle



Wind sock



Pilot reporting point

Revision history

Revision	Date	Changes
v1	2021-06-17	Initial version