



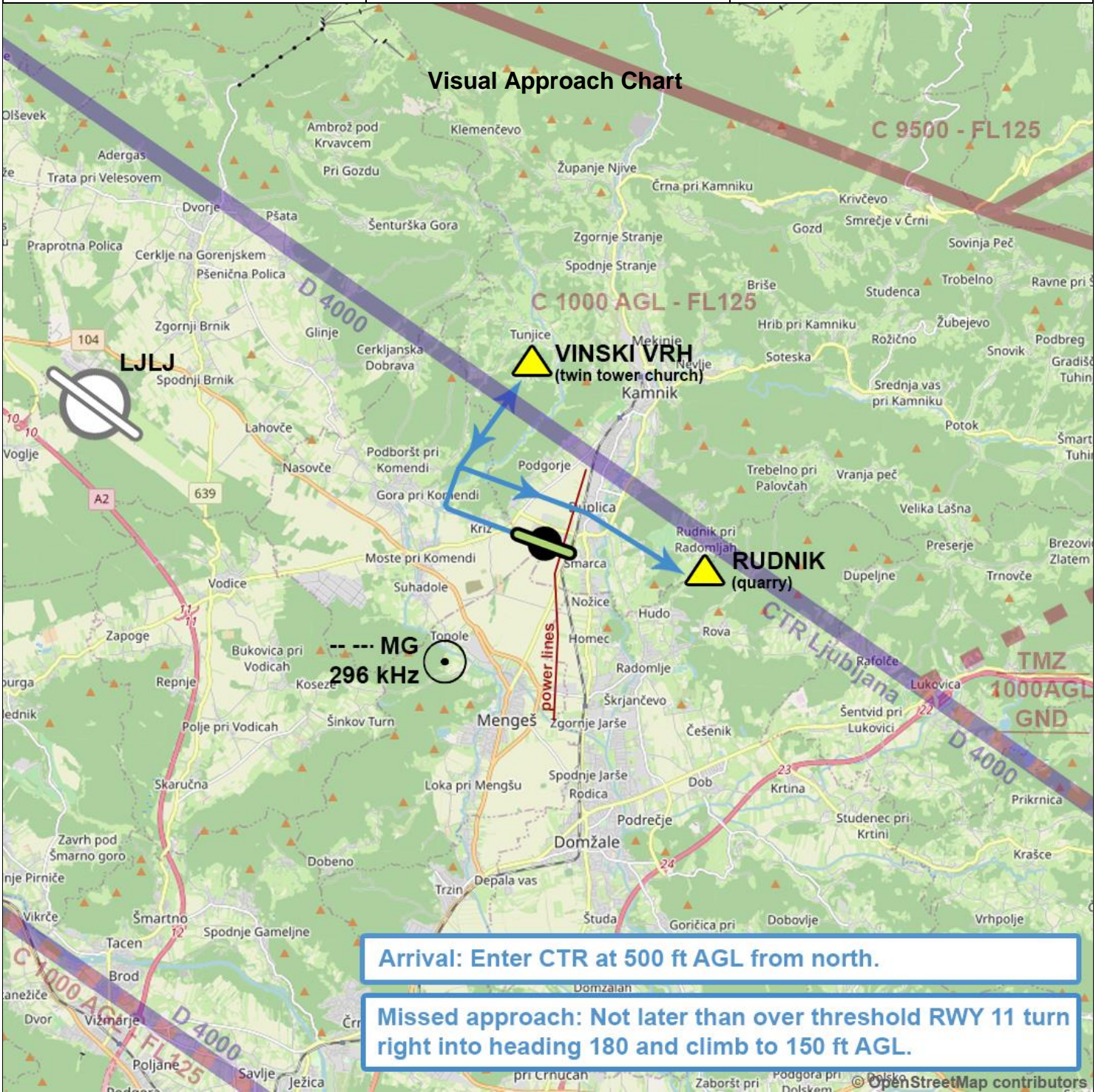
AOPA SLOVENIJA
2021-04-22

KAMNIK, SLOVENIA

DUPLICA

Apt Elev **1145'/349m**
N46°11'50" E014°34'51"

AIR/GND	KAMNIK AIRFIELD 123.505	FIS	LJUBLJANA INFO 118.480	TWR	LJUBLJANA TOWER 118.005
---------	-----------------------------------	-----	----------------------------------	-----	-----------------------------------



RWY	DIMENSION	SURFACE	TORA	TODA	ASDA	LDA	LIGHTS	PATTERN
11	425 x 25 m	grass				425	nil	LND only
29			425	425	425	T/O only		

NOTES:

All the distances in meters. Not for official use. All data for information purposes only. Check latest info in official aerodrome manual and AIP before commencing any flight. Copyleft © www.vfr-charts.ga



AOPA SLOVENIJA

2021-04-22

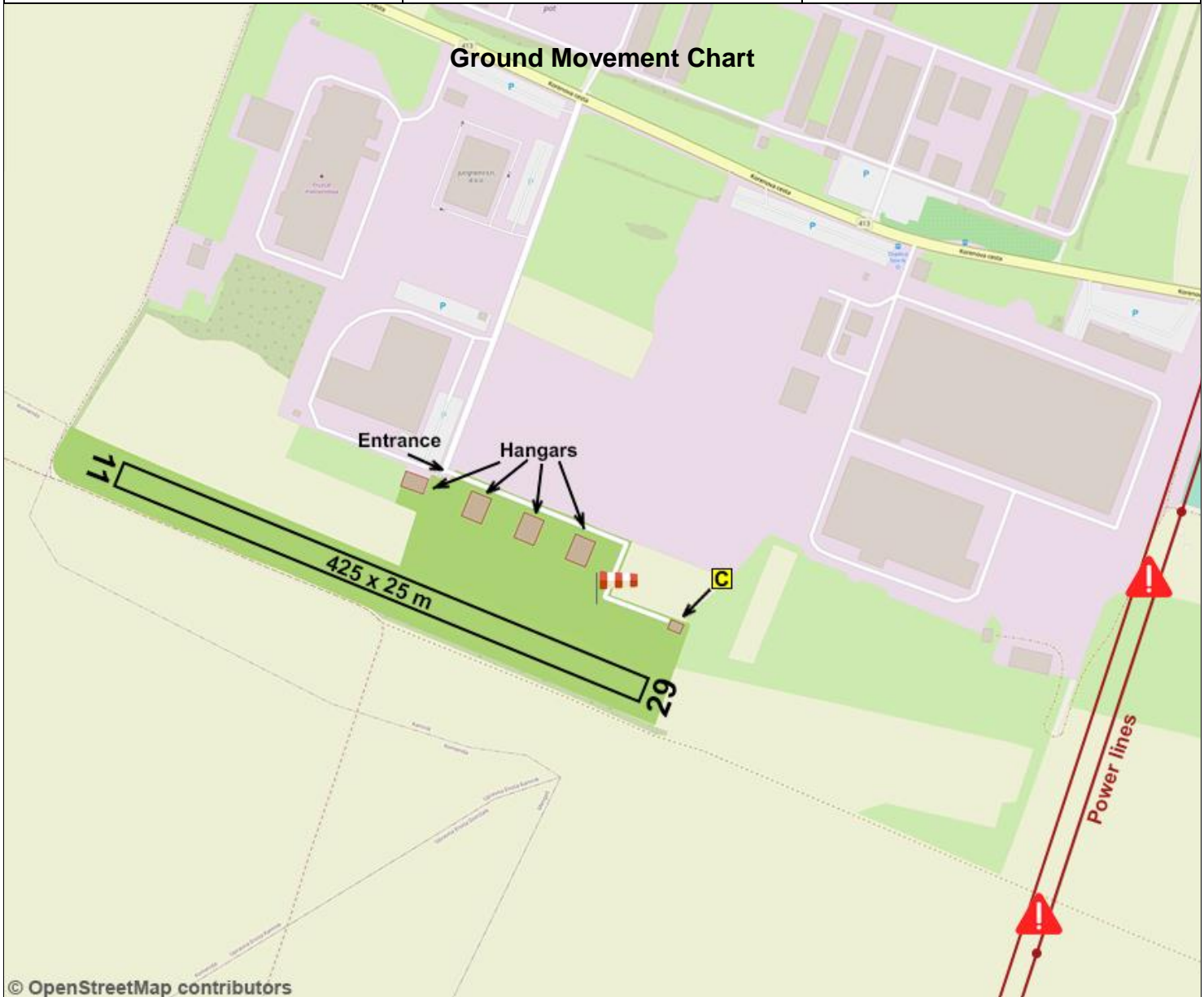
KAMNIK, SLOVENIA

DUPLICA

Apt Elev **1145'**/349m

N46°11'50" E014°34'51"

AIR/GND	KAMNIK AIRFIELD 123.505	FIS	LJUBLJANA INFO 118.480	TWR	LJUBLJANA TOWER 118.005
---------	-----------------------------------	-----	----------------------------------	-----	-----------------------------------

Ground Movement Chart

Warnings	<ol style="list-style-type: none"> 1. No continuous airfield radio watch. Transmit blind. 2. On board radio mandatory. 3. Airstrip is located within CTR Ljubljana. Clearance to enter the airspace must be obtained from corresponding ATS (Ljubljana TWR). 4. Power lines 342 m and 366 m E of threshold RWY 29 (height 10 m and 35 m).
-----------------	---

Remarks	<ol style="list-style-type: none"> 1. PPR – prior permission required. 2. Traffic pattern height is maximum 150 ft AGL or as obtained from ATS. 3. Only VFR flights allowed.
----------------	---

Operator	Letalski klub Kamnik	Email	letalski.klub.kamnik@gmail.com
Address	Korenova ulica 9a	Internet	http://www.vzletisce-kamnik.si
Zip City	SI-1241 Kamnik	ARO	+386 4 2040 420 – Ljubljana
Mobile	+386 31 878 645	METEO	+386 4 2804 500 – Ljubljana
Tel		Customs	N/A
Fax		Fuel	N/A

SYMBOL LEGEND



Aerodrome with paved runway



Aerodrome with grass runway



Another aerodrome



UL airstrip



Traffic pattern for general aviation



Traffic pattern for gliders



Non compulsory reporting point



Compulsory reporting point



Hospital



Power plant

D 7500-FL195
E 2500 AGL-7500

Airspace class with vertical limits



Paved runway with treshold designation



Grass runway with displaced treshold and treshold designation



Paved taxiway with designation



Grass taxiway with designation



Parachuting circle



Wind sock



Pilot reporting point

Revision history

Revision	Date	Changes
v1	2021-04-22	Initial version