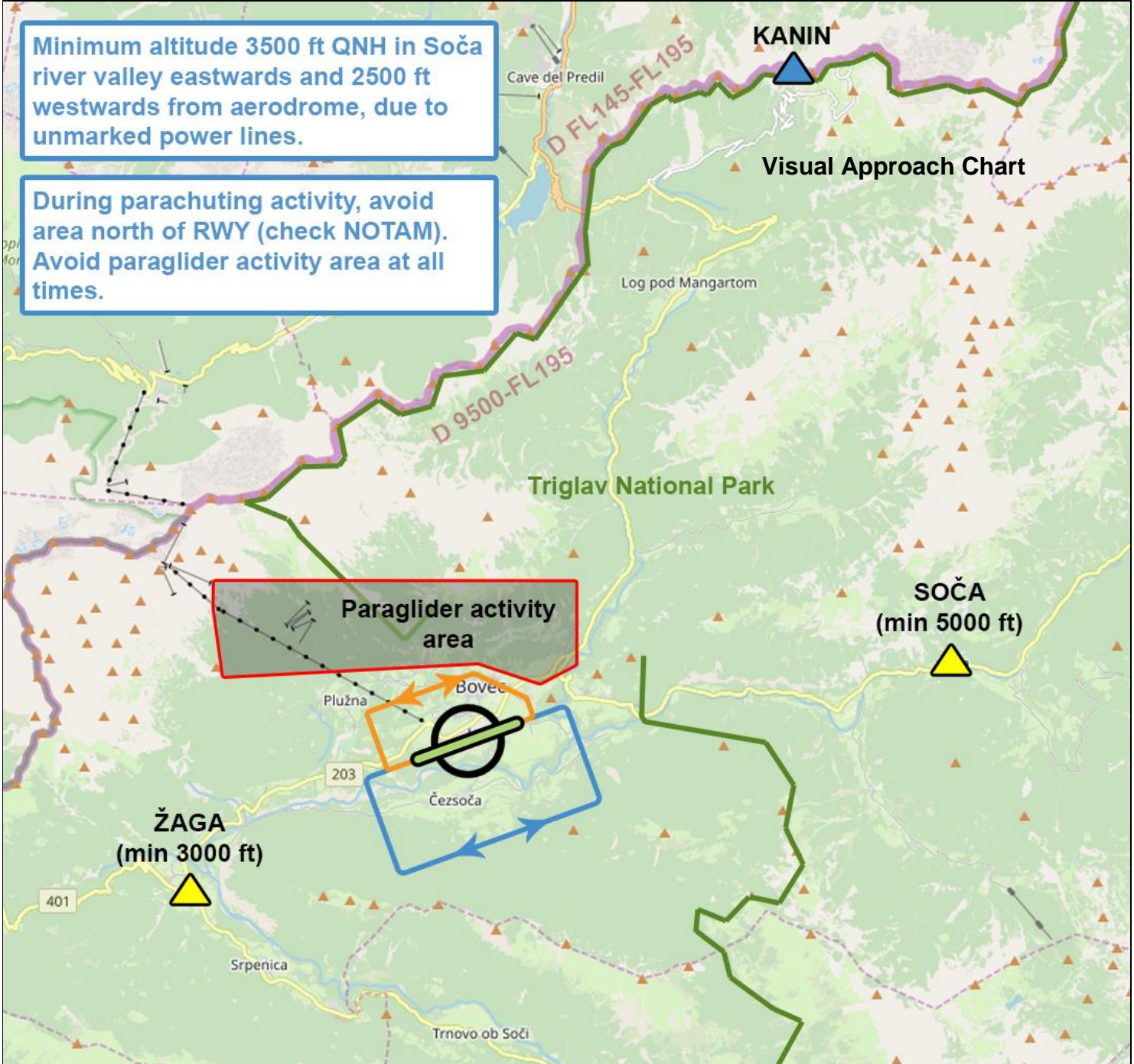


| | | | |
|---------|--|-----|---|
| AIR/GND | BOVEC AERODROME 123.505 MHz | FIS | LJUBLJANA INFO 118.480 MHz |
|---------|--|-----|---|



| RWY | DIMENSION | SURFACE | TORA | TODA | ASDA | LDA | LIGHTS | PATTERN |
|-----|------------|---------|------|------|------|-----|--------|----------|
| 07 | 850 x 40 m | grass | 850 | 850 | 850 | 850 | nil | RH (LH*) |
| 25 | | | 850 | 850 | 850 | 850 | | LH (RH*) |

NOTES:

* Traffic pattern for gliders

All the distances in meters. Not for official use. All data for information purposes only. Check latest info in official aerodrome operations manual and AIP before commencing any flight. Copyleft © 2021.

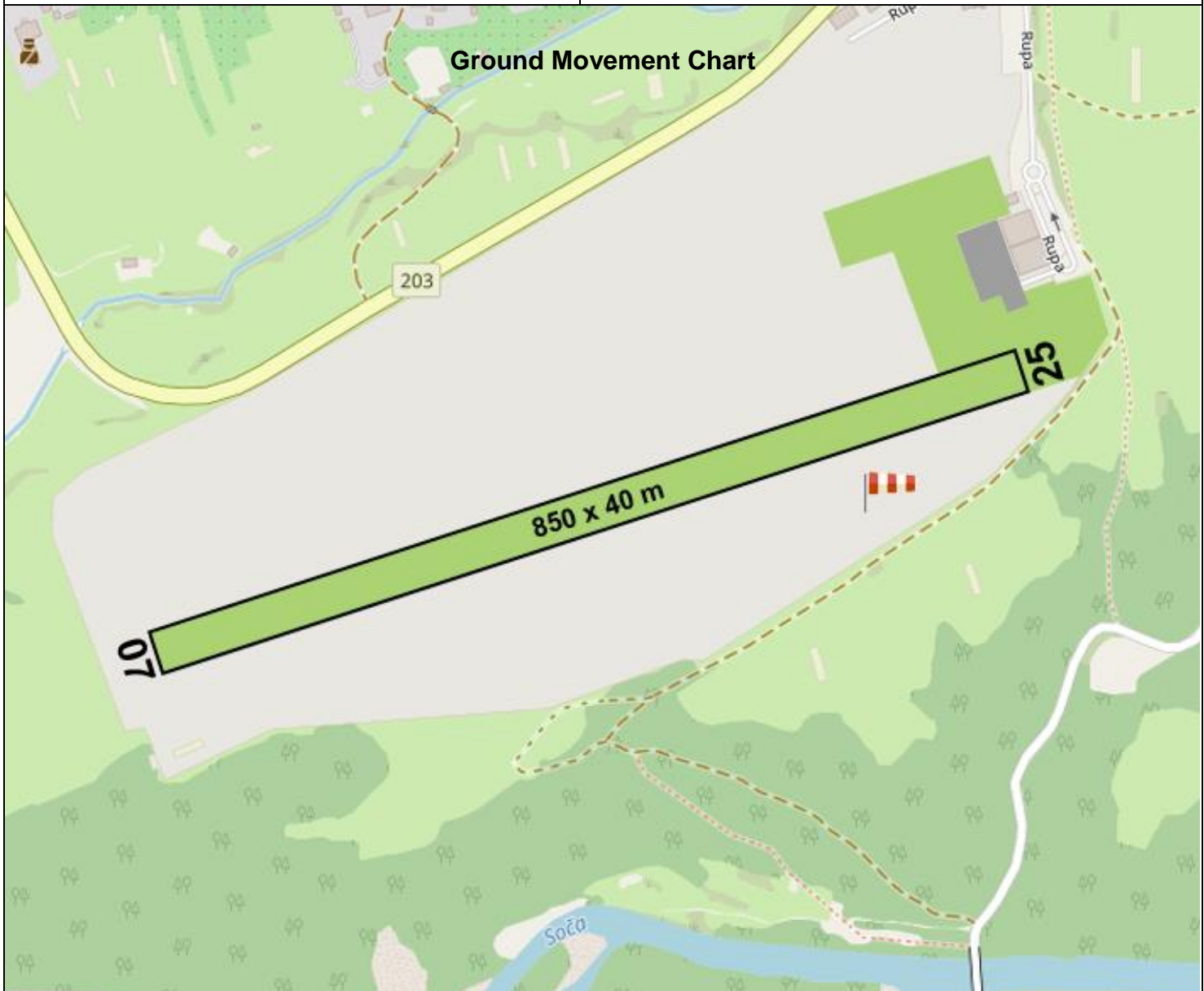
LJBOApt Elev **1414⁷/431m**
N46°19'44" E013°52'56"

AOPA SLOVENIJA

2021-03-25

BOVEC, SLOVENIA

| | | | |
|---------|--|-----|---|
| AIR/GND | BOVEC AERODROME 123.505 MHz | FIS | LJUBLJANA INFO 118.480 MHz |
|---------|--|-----|---|



| | | | |
|-----------------|--|-----------------|---------------------------------|
| Warnings | <ol style="list-style-type: none"> No continuous radio watch. Minimum altitude 3500ft QNH in Soča river valley towards E and 2500 ft towards W, due to unmarked power lines. Minimum altitude in Triglav National Park is 6000 ft QNH and 1000 ft AGL. Surrounding area known for heavy rains and quick weather changes. | | |
| Remarks | <ol style="list-style-type: none"> PPR – prior permission required. Often parachuting activity – check NOTAM. Often paragliding activity in Soča river valley. | | |
| Operator | Aviofun d.o.o. | Email | info@bovec-airport.com |
| Address | Rupa 17 | Internet | www.bovec-airport.com |
| Zip City | SI-5230 Bovec | ARO | +386 4 2040 420 – Ljubljana |
| Tel | | METEO | +386 4 2804 500 – Ljubljana |
| Fax | | Customs | N/A |
| Mobile | +386 51 661 003 | Fuel | JET A1, 100 LL, (MOGAS on req.) |

Not for official use. All data for information purposes only. Copyleft © 2021.

SYMBOL LEGEND



Aerodrome with paved runway



Aerodrome with grass runway



Traffic pattern for general aviation



Traffic pattern for gliders



Non compulsory reporting point



Compulsory reporting point



Hospital



Power plant

D 7500-FL195

E 2500 AGL-7500

Airspace class with vertical limits



Paved runway with treshold designation



Grass runway with displaced treshold and treshold designation



Paved taxiway with designation



Grass taxiway with designation



Parachuting circle



Wind sock

Revision history

| Revision | Date | Changes |
|----------|------------|-----------------|
| v1 | 2021-03-25 | Initial version |