

LJPO

Apt Elev **1739'**/530m
N45°45'14" E014°11'45"



AOPA SLOVENIJA
2021-03-25

POSTOJNA, SLOVENIA

RAKITNIK

AIR/GND

POSTOJNA AERODROME
123.505 MHz

FIS

LJUBLJANA INFO
118.480 MHz

Avoid overflying residential area of town Postojna.

Visual Approach Chart

D 7500-FL195
E 2500 AGL-7500

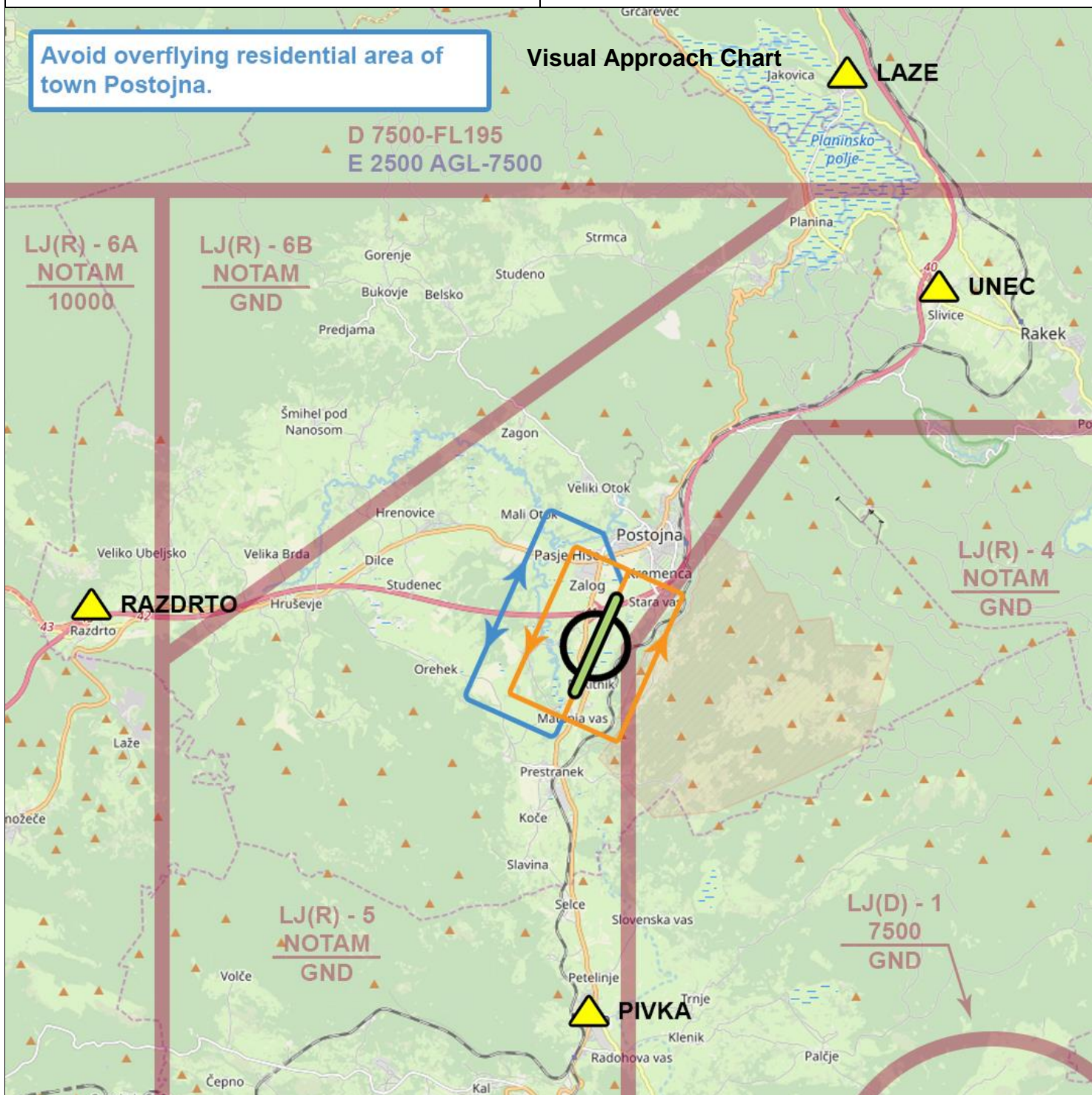
LJ(R) - 6A
NOTAM
10000

LJ(R) - 6B
NOTAM
GND

LJ(R) - 4
NOTAM
GND

LJ(R) - 5
NOTAM
GND

LJ(D) - 1
7500
GND



RWY	DIMENSION	SURFACE	TORA	TODA	ASDA	LDA	LIGHTS	PATTERN
02	750 x 60 m	grass	750	750	750	650	nil	LH
20			750	750	750	750		RH (LH*)

NOTES:

All the distances in meters. Not for official use. All data for information purposes only. Check latest info in official aerodrome operations manual and AIP before commencing any flight. Copyleft © 2021.

* Traffic pattern for gliders

LJPO

Apt Elev **1739'**/530m
 N45°45'14" E014°11'45"



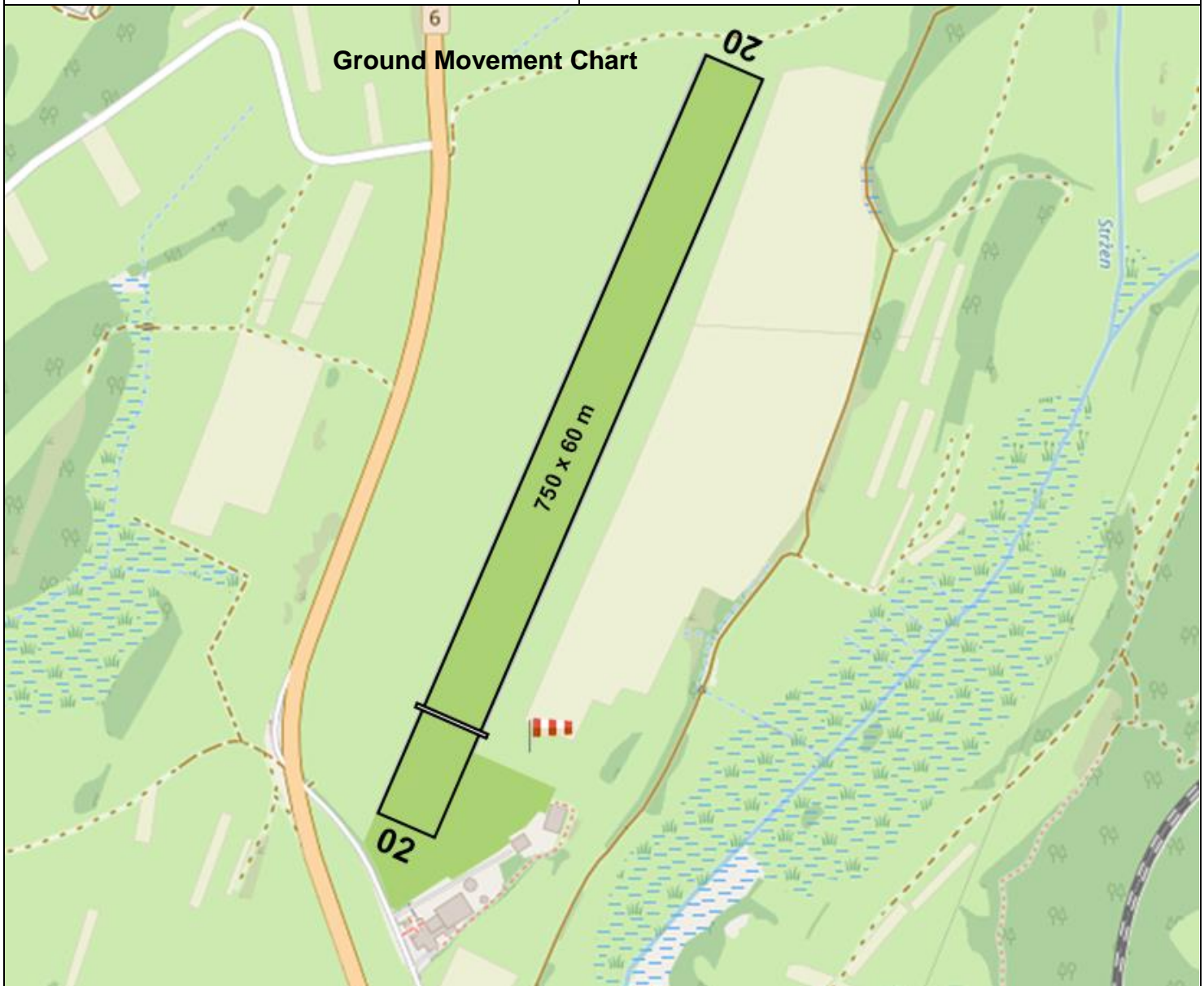
AOPA SLOVENIJA

2021-03-25

POSTOJNA, SLOVENIA

RAKITNIK

AIR/GND	POSTOJNA AERODROME 123.505 MHz	FIS	LJUBLJANA INFO 118.480 MHz
---------	-----------------------------------	-----	-------------------------------



Warnings	<ol style="list-style-type: none"> 1. No continuous radio watch. 2. Restricted airspace triggered by NOTAM surrounding the aerodrome. 3. Heavy wind shear can occur on final 02 when wind from NE (Bora winds). 4. Wind shear can occur on final 20 when wind from W. 		
Remarks	<ol style="list-style-type: none"> 1. PPR – prior permission required. 2. Avoid overflying residential areas of town Postojna. 3. Traffic pattern for GA airplanes is always western. 4. Traffic pattern for gliders is always left. 		
Operator	Aeroklub Postojna	Email	aeroklub.postojna@gmail.com
Address	Rakitnik 1a	Internet	
Zip City	SI-6258 Prestranek	ARO	+386 4 2040 420 – Ljubljana
Tel	+386 5 7264 151	METEO	+386 4 2804 500 – Ljubljana
Fax	+386 5 7264 151	Customs	N/A
Mobile		Fuel	N/A

Not for official use. All data for information purposes only. Copyright © 2021.

SYMBOL LEGEND



Aerodrome with paved runway



Aerodrome with grass runway



Traffic pattern for general aviation



Traffic pattern for gliders



Non compulsory reporting point



Compulsory reporting point



Hospital



Power plant

D 7500-FL195

E 2500 AGL-7500

Airspace class with vertical limits



Paved runway with threshold designation



Grass runway with displaced threshold and threshold designation



Paved taxiway with designation



Grass taxiway with designation



Parachuting circle



Wind sock

Revision history

Revision	Date	Changes
v1	2021-03-25	Initial version