

LJSGApt Elev **1644¹/501m**

N46°28'18" E015°07'03"



AOPA SLOVENIJA

2021-03-25

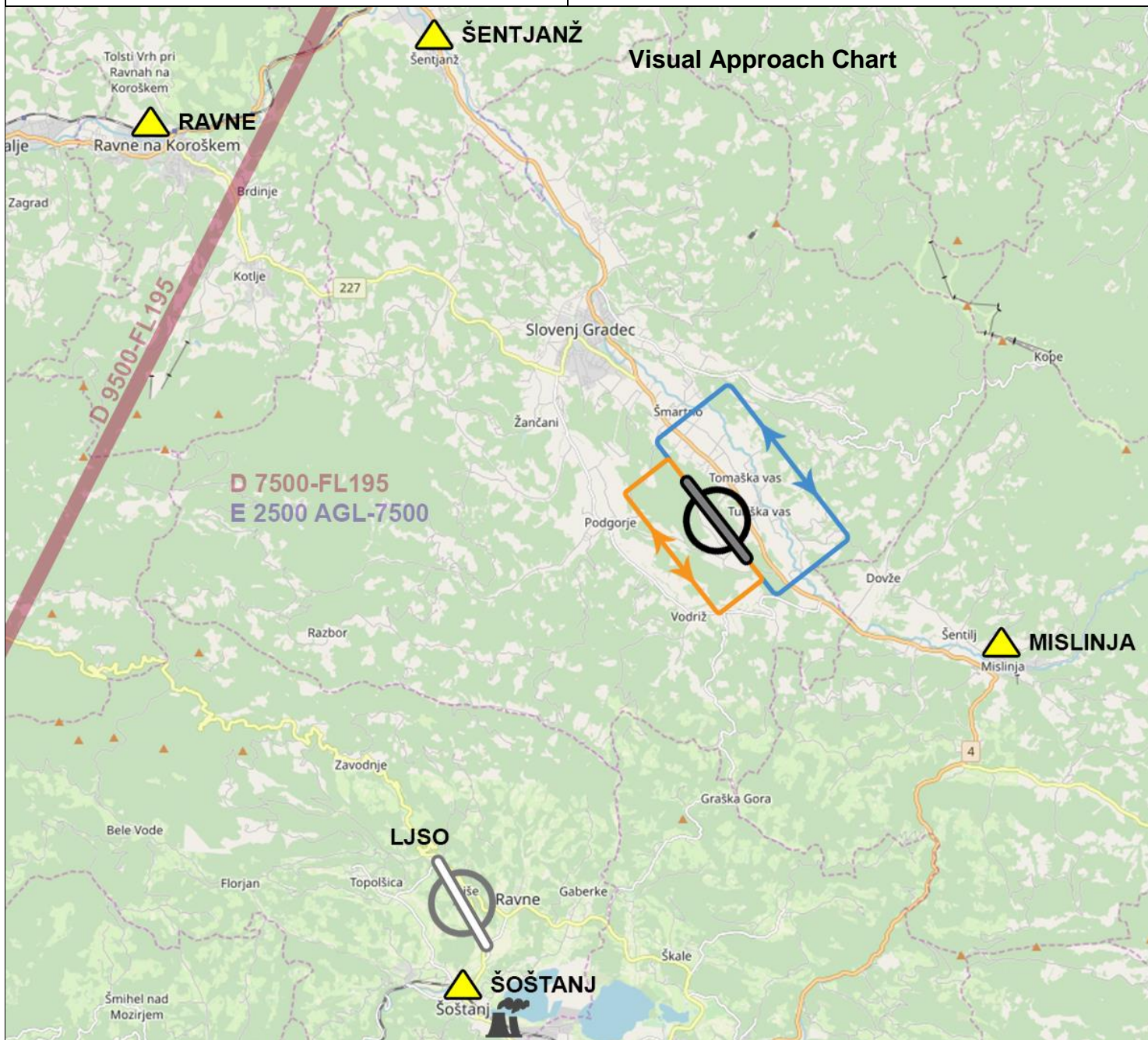
SLOVENJ GRADEC, SLOVENIA

MISLINJSKA DOBRAVA

AIR/GND

SLOVENJ GRADEC AERODROME
123.505 MHz

FIS

LJUBLJANA INFO
118.480 MHz

RWY	DIMENSION	SURFACE	TORA	TODA	ASDA	LDA	LIGHTS	PATTERN
14	1200 x 23 m	asphalt	1200	1200	1200	1100	nil	LH (RH*)
32			1200	1200	1200	1200		RH (LH*)
14 R	650 x 30 m	grass	650	650	650	650	nil	LH (RH*)
32 L			650	650	650	650		RH (LH*)

NOTES:

All the distances in meters. Not for official use. All data for information purposes only. Check latest info in official aerodrome operations manual and AIP before commencing any flight. Copyleft © 2021.

* Traffic pattern for gliders

LJSG

Apt Elev **1644⁷/501m**
 N46°28'18" E015°07'03"



SLOVENJ GRADEC, SLOVENIA
 MISLINJSKA DOBRAVA

AIR/GND	SLOVENJ GRADEC AERODROME 123.505 MHz	FIS	LJUBLJANA INFO 118.480 MHz
---------	--	-----	--------------------------------------

Ground Movement Chart



Warnings	1. No continuous radio watch.		
Remarks	1. PPR – prior permission required.		
Operator	Aerodrom Slovenj Gradec d.o.o.	Email	ljsg.info@gmail.com
Address	Mislinjska Dobrava 110	Internet	
Zip City	SI-2383 Šmartno pri Slovenj Gradcu	ARO	+386 4 2040 420 – Ljubljana
Tel	+386 2 8855 502	METEO	+386 4 2804 500 – Ljubljana
Fax		Customs	N/A
Mobile		Fuel	100 LL, JET A1, NMB95 octane

Not for official use. All data for information purposes only. Copyleft © 2021.

SYMBOL LEGEND



Aerodrome with paved runway



Aerodrome with grass runway



Traffic pattern for general aviation



Traffic pattern for gliders



Non compulsory reporting point



Compulsory reporting point



Hospital



Power plant

D 7500-FL195

E 2500 AGL-7500

Airspace class with vertical limits



Paved runway with treshold designation



Grass runway with displaced treshold and treshold designation



Paved taxiway with designation



Grass taxiway with designation



Parachuting circle



Wind sock

Revision history

Revision	Date	Changes
v1	2021-03-25	Initial version